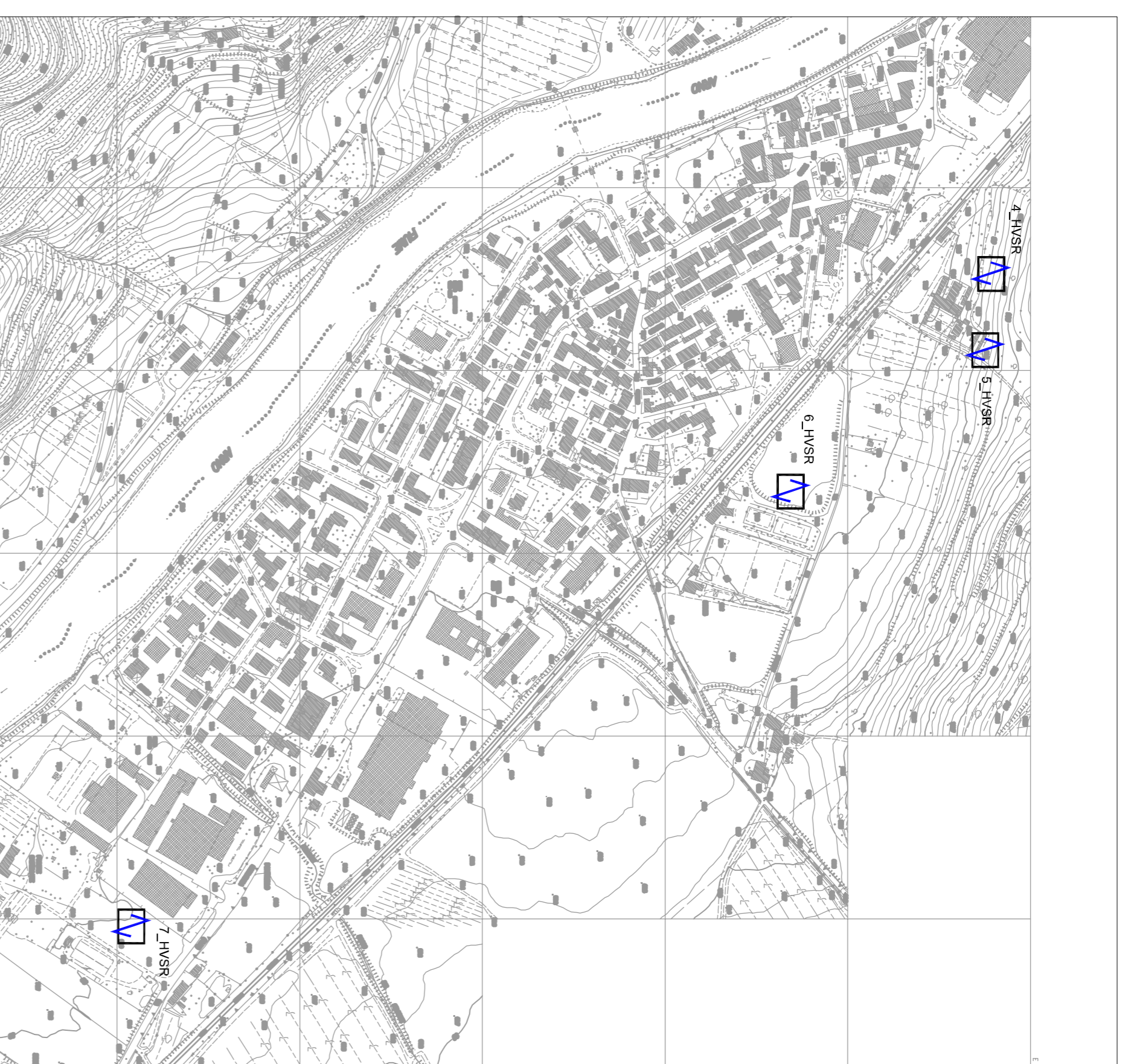


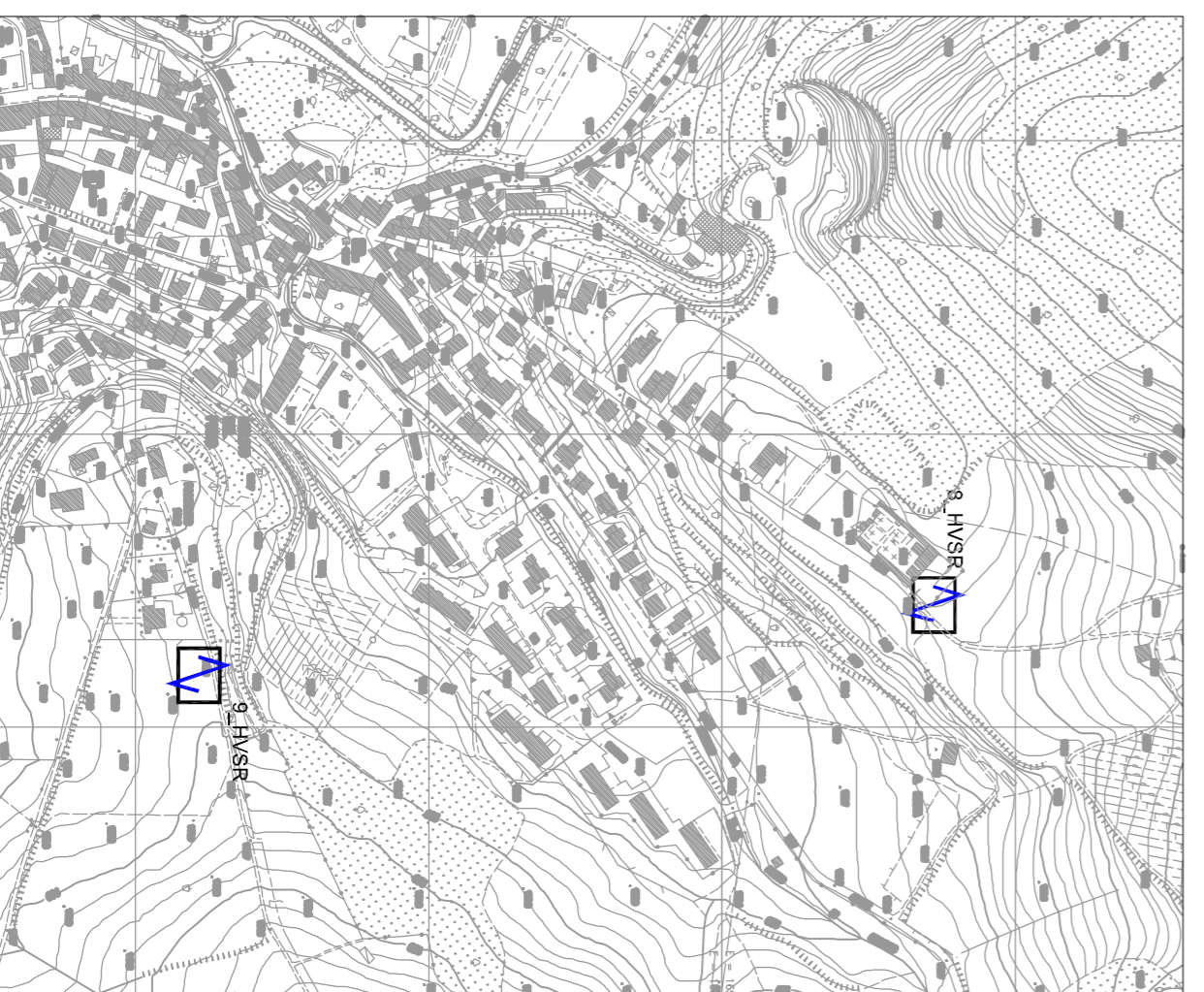
PONTASSIEVE - SCALA 1:5.000



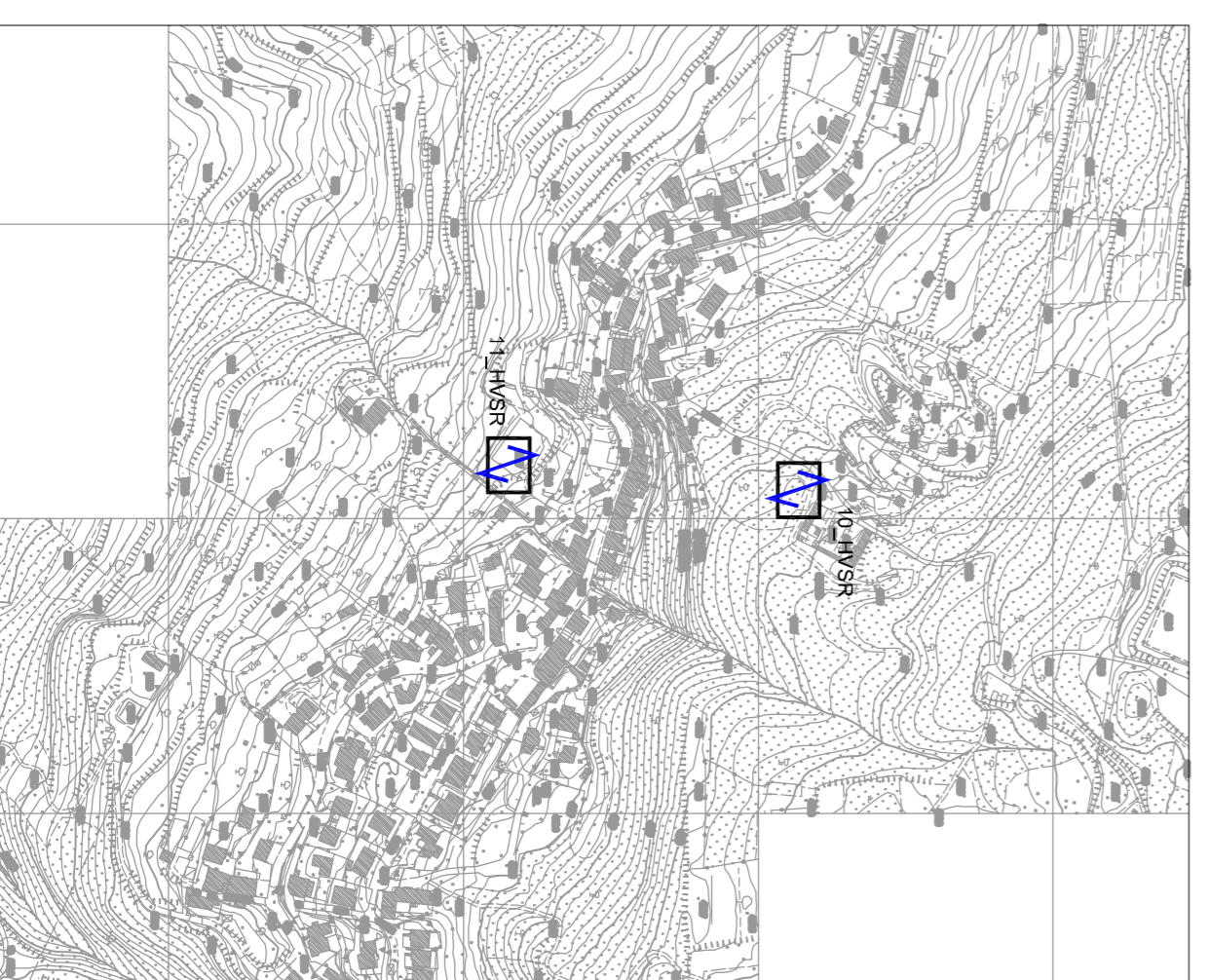
SIECI - SCALA 1:5.000



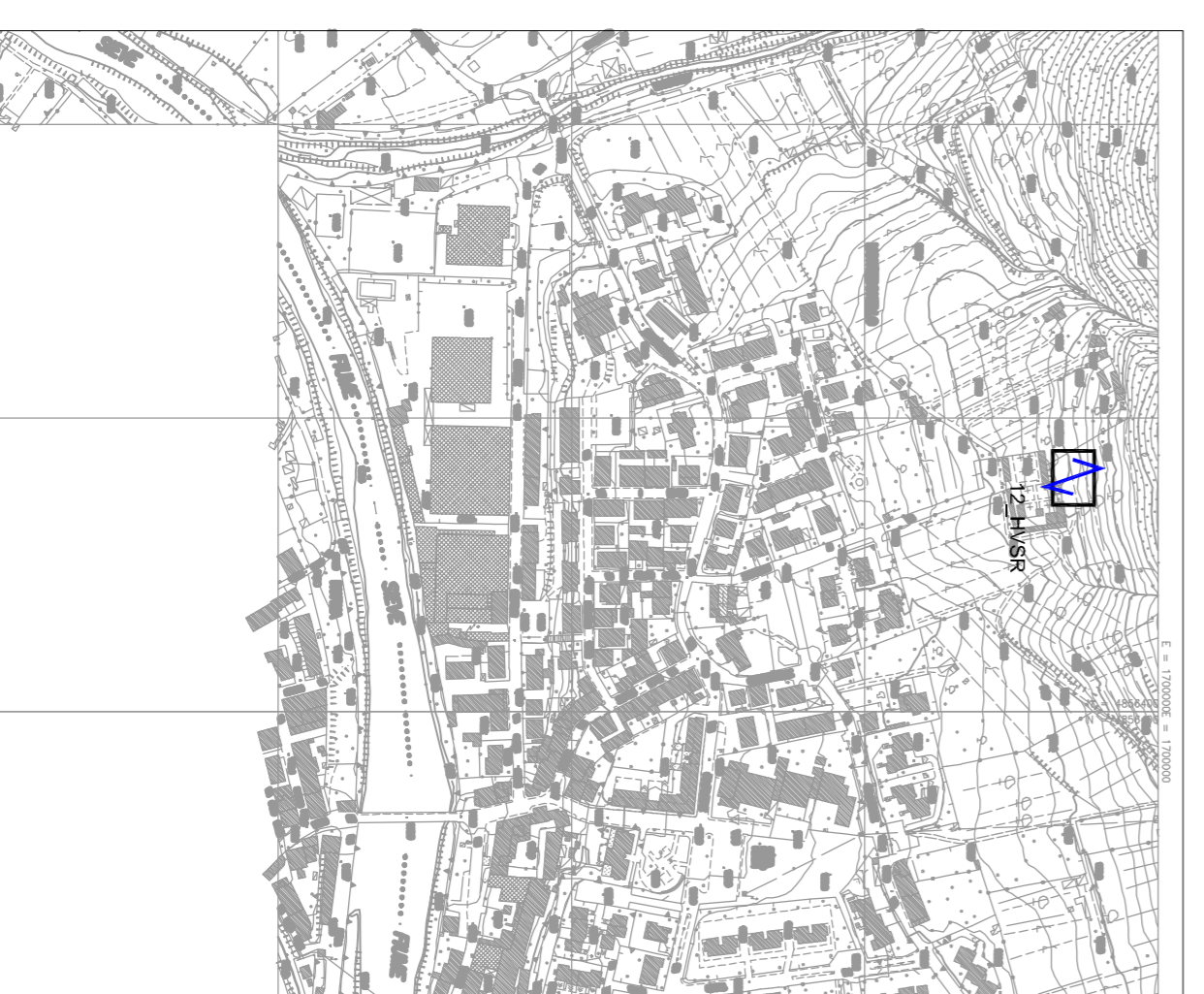
MOLINO DEL PIANO - SCALA 1:5.000



SANTA BRIGIDA - SCALA 1:5.000

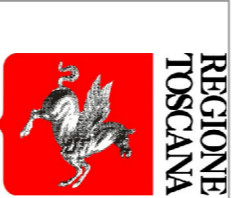


MONTEBONELLO - SCALA 1:5.000



LEGENDA

 STAZIONE MICROTREMORE A STAZIONE SINGOLA



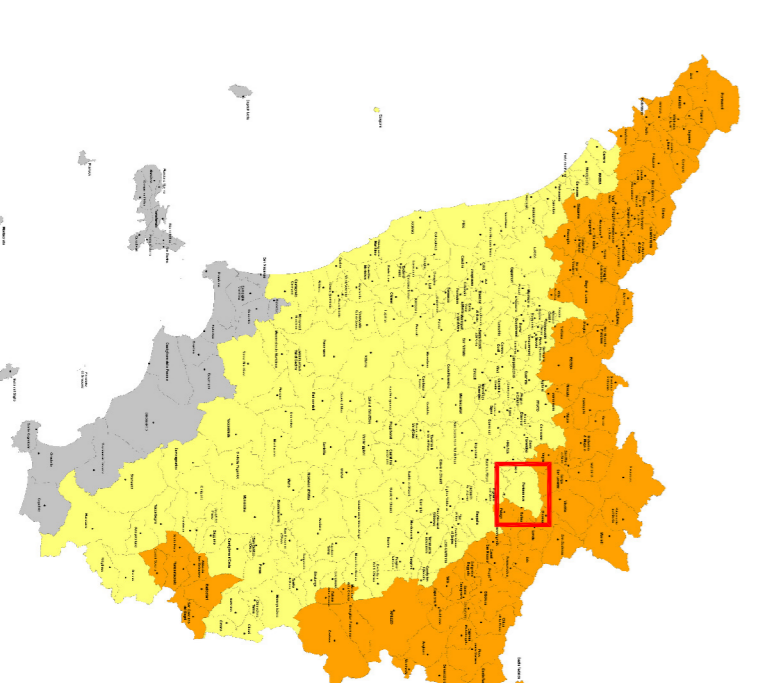
VARIANTE GENERALE AL PIANO STRUTTURALE E
REGOLAMENTO URBANISTICO AGGIORNAMENTO
QUADRO CONOSCITIVO

MICROZONAZIONE SISMICA
TAV: 01 - Carta delle indagini

scala 1 : 5.000

Regione Toscana
Comune di Pontassieve (FI)

MARZO 2014



COORDINATORE DEL PROGETTO:



Geologo Roggiati
Avv. Calchi Novati
Pisa

ESECUZIONE INDAGINI:



ENKI
INGEGNERIA

COLLABORAZIONE ALLE INDAGINI:



GA
CONSULTING